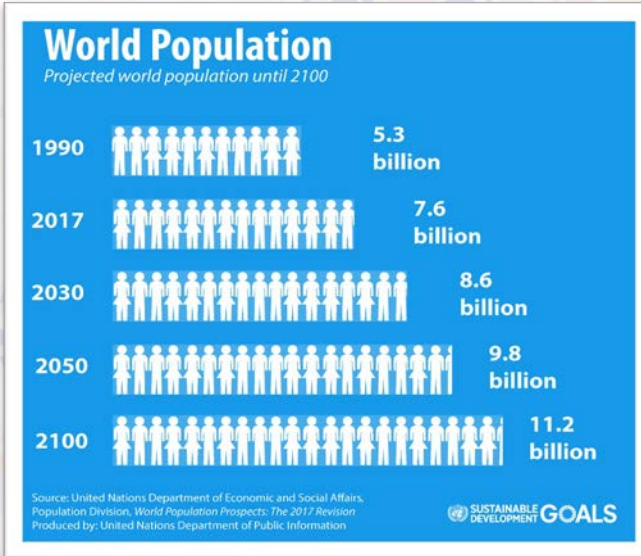
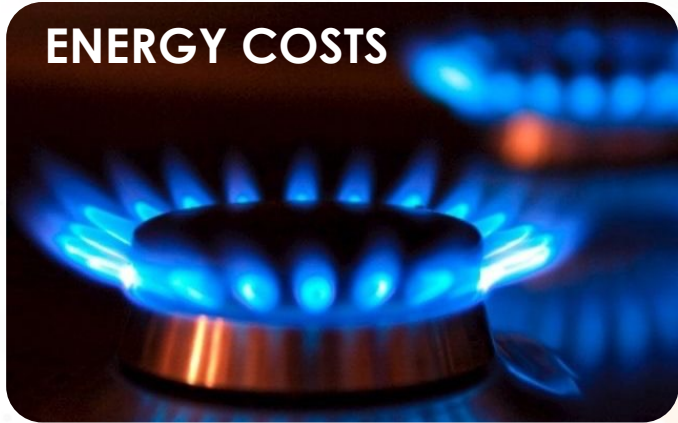


# BAMA Ai



**FOR A MOST SUSTAINABLE PRODUCTION**

# INDUSTRIAL AND AGRICULTURAL PRODUCTION FACE MULTICOMPLEX PROBLEMS





# NEW AGRICULTURAL SOLUTIONS LIKE CEA/VIF ARE ON THE RISE

- CARBON EMISSIONS
- WATER CONSUMPTION (1-5%)
- USE OF FERTILIZER
- SKILLED WORKERS
- LAND CONSUMPTION (20%)
- + YIELD / m<sup>2</sup> (2.500%)



- + BIO-DIVERSITY
- + CROP PROTECTION
- + CROP VARIETY

## \$171.1 bn Market Size 2026\*





Significantly reduced amount of required data points



Predictive models and deep analysis results already achievable after 5 batches

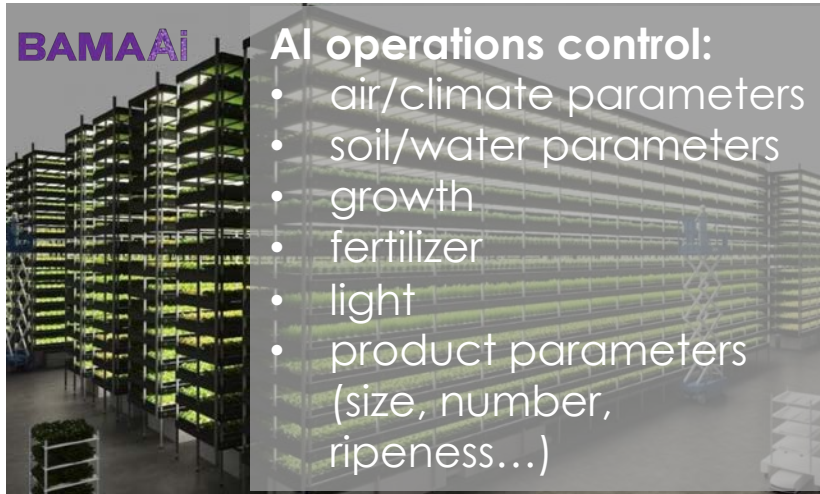


Intuitively visualized predictions and alerts based on batch result fluctuations – in real-time with deep/root cause analysis

**AI input control:**

- natural resources
- energy
- production resources

**BAMAi**

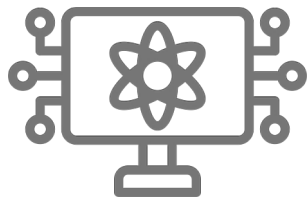


**AI operations control:**

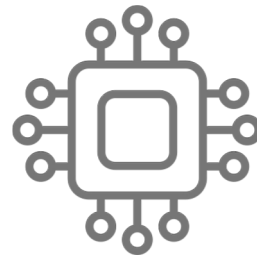
- air/climate parameters
- soil/water parameters
- growth
- fertilizer
- light
- product parameters (size, number, ripeness...)

**AI output control:**

- yield (crops/animals/fungi in numbers/size/weight)
- timing/output planning
- waste



Cloud and/or on-prem capable/operable



Connectable to any marketable IoT data collection platform

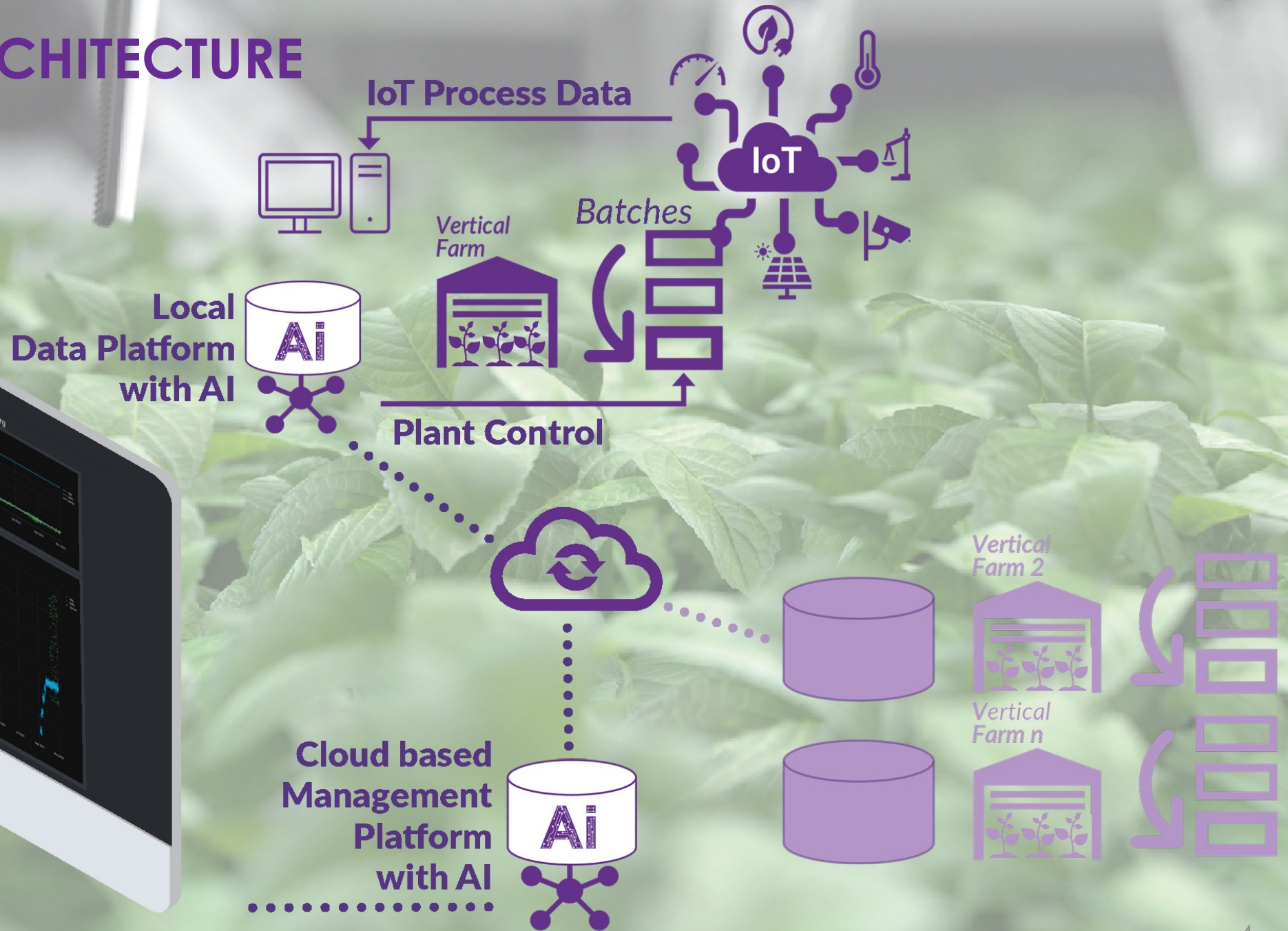


Analysis of historical data (if any) is not limited to periods/intervals

# OUR „CEA“ ARCHITECTURE



Production Management Dashboard



# OUR HIGH PERFORMING SOLUTION LEADS TO STRONG IMPACT

Python-based artificial intelligence, in a local and a cloud instance

Usage of Neural Networks to generate feature maps

Neural Networks + batch fingerprinting for regression/pattern recognition and prediction

Comprehensive production and system optimization using AI algorithms

**Result:**  
planning,  
management,  
controlling and  
optimization  
from one  
system



**OUTPUT** planning & control

**SHORTENED** process **CYCLES**

**ZERO WASTE** production

**Significant energy SAVINGS**

**SAVE** input resources

**Multi-/cross-site MANAGEMENT**

# OUR CONTRIBUTION – 11/17 UN-SDGs



# Our vision


**We will achieve most sustainable production  
using AI for a better future for all.**

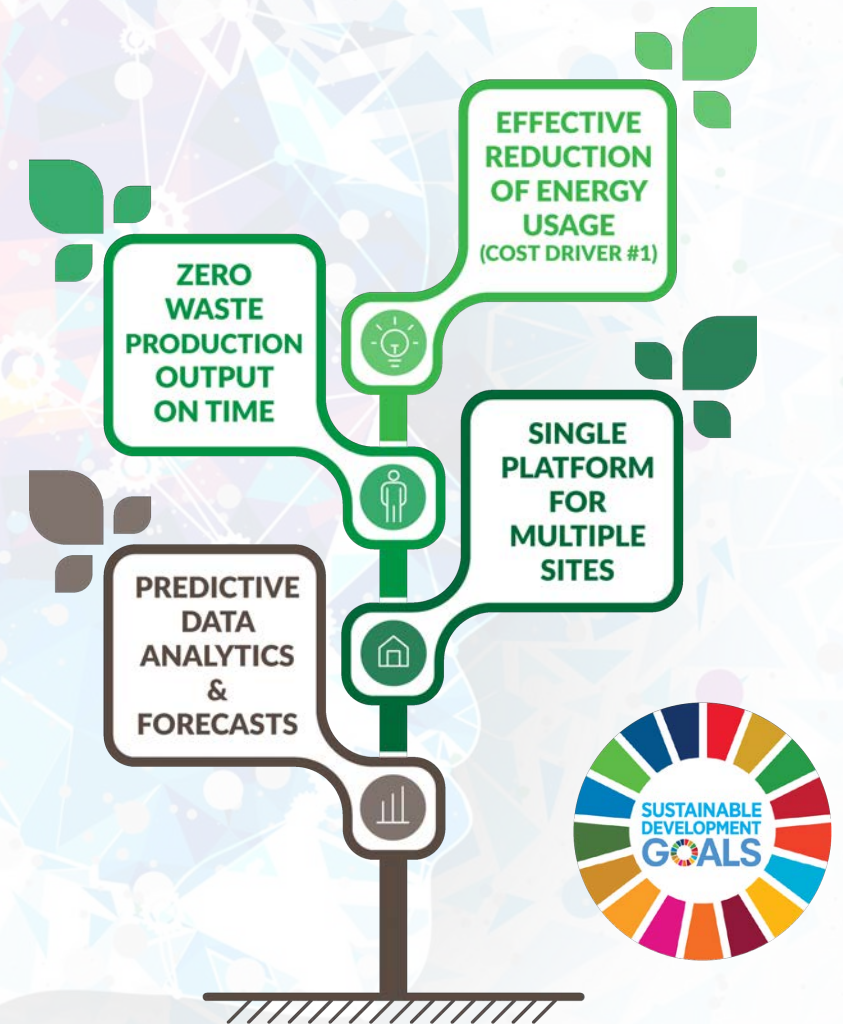
**We will be the world market leader  
for AI-controlled batch processes by 2028.**

**BAMA**  **ai**



# OUR OFFERING: BAMAAl technology supports industries in reaching their sustainability goals

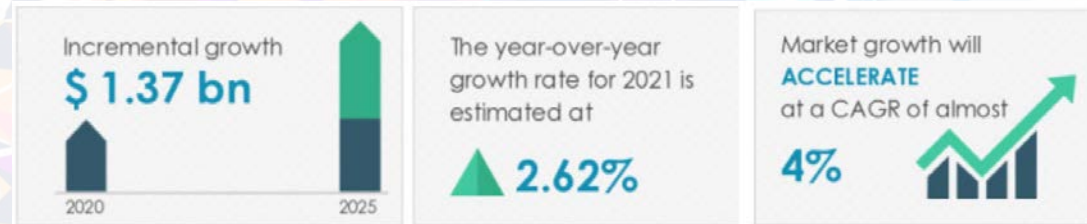
- We are the industry solution supplier delivering proven neural network AI to manage, optimize and predict **BATCH production with limited data points**
- **BAMAAl**'s goal is to save at least  of energy, water, raw materials, carbon foot- print and waste for a more sustainable industrial production
- BAMAAl offers their customers a **hybrid product (SaaS AI-platform) & services portfolio**
- Our cloud-connected BAMAAl solution will be the **new batch industry standard**, helping in **getting substantially better in the sustainable development goals (SDG)**



# COMPETITION

## INDUSTRY

- ABB Ltd.
- Automated Process Equipment Corp.
- Azbil Corp.
- Emerson Electric Co.
- Hitachi Ltd.
- Honeywell International Inc.
- OMRON Corp.
- Rockwell Automation Inc.
- Siemens AG
- Yokogawa Electric Corp.
- ....
- Process Specialist Tools (partially using AI/ML, but still **no batch-specific solution offers**): Trendminer, Ferolabs und Seeq.
- General Tech & Consulting Firms not active yet, but may jump on topics at any time: IBM, CapGemini, Accenture, etc.



The market for batch process optimization is used here as an indicator of strong market growth.

Current figures indicate that the market for "Batch Control Systems" will **increase by USD 1.37 billion** by 2025, with a compound annual growth rate (CAGR) of 4% from 2021-2025.

# PROOF OF CONCEPT & LEADING CUSTOMER:



- **BAMAAI** conceptualizes, develops and implements **Corbiota's CEA earthworm farms** fully according to the shown specifications and architecture since early 2023, delivering healthy animal nutrition for chicken, piglets & more, and even fertilizer for crop... see [www.corbiota.com](http://www.corbiota.com)
- **Pilot production in NRW/Germany is operative**, ramping up to full production output (1 ton/a) in Q3/Q4 2023 with extended automation, fully AI controlled by BAMAAI
- BAMAAI transfers the AI-controlled concept to the **commercial production site in Brandenburg/Germany** which is planned by Corbiota to start in 2023/2024 (100 tons/a)
- Next step is BAMAAI builds a cross-connected and integratively managed concept for Corbiotas next planned production sites in the **US, Latin America and UK**



# ONE MORE THING...

...we do not only deal with inhouse farming...

# BAMAi

## IN INDUSTRY



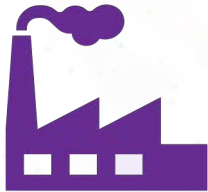
Works with any discontinuous production processes („batch“)

- Chemical Industry
- Food & Beverage Industry
- Pharmaceuticals
- ...



# CUSTOMER SEGMENTATION

BAMA AI primarily focuses on two customer segments, using the same knowledge, technology and resources:



**INDUSTRY**  
(Chemical, Pharmaceutical, Food...)

**Customer benefits**  
Energy savings, (cycle) time reduction, waste avoidance, product quality enhancement, predictions/forecast

**Regional focus**  
Europe (DACH)

**Product portfolio**  
Process engineering, IoT & AI-driven Data Analytics, Prediction models for Batches



**AGRITECH**  
(VIF/CEA Inhouse Farming)

**Customer benefits = Industry benefits, PLUS**  
Carbon footprint reduction, water & fertilizer saving, on-time production & delivery, labour & error reduction, multi-/cross-site mgmt., non-seasonal cropping

**Regional focus**  
Europe (Non-DACH: NL, FRA, ESP, ITA, Nordics), North America, South America, Africa, Middle East, Far East (Singapore, Japan, China)

**Product portfolio = Industry portfolio, PLUS**  
Full farm planning, management & controlling via Cloud Based BAMA AI SaaS

# OUR LEADERSHIP TEAM



BAMA*i*

**Claus-Andreas Boche**  
Chairman of the Board



BAMA*i*

**Phillip Rühl**  
CTO



BAMA*i*

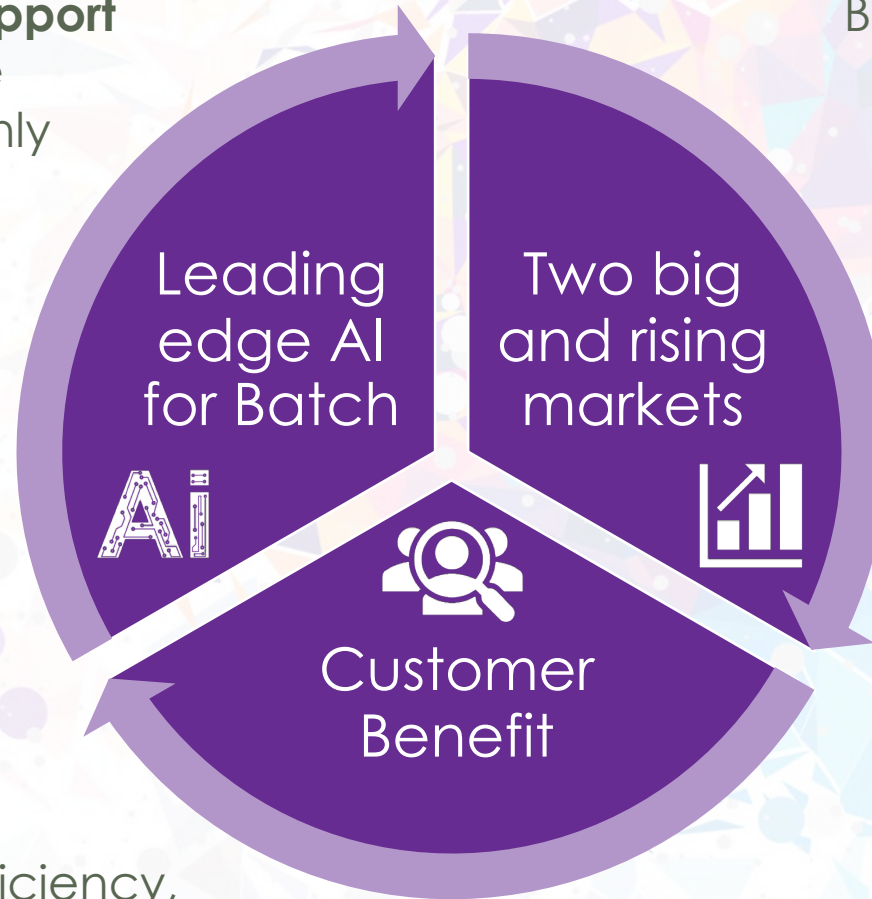
**Alexandra Schneider**  
Commercial lead

## PARTNER



# WHY INVEST IN BAMA AI?

BAMA AI is **first player to fully support batch production** and optimize it with true AI data analytics, only needing limited datapoints



Both markets, **Industry and Agritech (CEA/VIF)**, still emerge and grow – and are both future markets with future global relevance

BAMA AI's customers are now and will stay under **high and rising pressure** to gain more efficiency, saving energy and producing more sustainably

BAMA AI's products and services support up to 11 of 17 UN-SDGs





# CONTACT



## Claus-Andreas Boche

CEO of BAMA AI – a venture of advisoryteam®  
advisoryteam at<sup>3</sup> GmbH, Königsallee 27, 40212 Düsseldorf (Germany)



[claus@bamaai.de](mailto:claus@bamaai.de)



[www.bamaai.de](http://www.bamaai.de)



+49 211 43794445



+49 160 92880114



[xing.com/companies/advisoryteamat<sup>3</sup>gmbh](https://www.xing.com/companies/advisoryteamat3gmbh)



[linkedin.com/company/bamaai](https://www.linkedin.com/company/bamaai)



[@advisoryteam](https://www.instagram.com/advisoryteam)

